

V14.3TM
MAY 2024

Software Upgrades to Drive New Levels of Operational Excellence

Including Updates to the Performance Engineering, Manufacturing & Supply Chain, Asset Performance Management and AspenTech DataWorks Suites



CONTENTS

Before You Install	4
Installing and Upgrading Your Software	7
Documentation	8
Translated Versions	8
Technical Support	9
Support Center Hours & Phone Numbers	10

Welcome to the V14.3 May 2024 Release of aspenONE®

aspenONE V14.3 May 2024 is here, with important updates to a number of products across our portfolio (complete list below). Backed by AspenTech’s 40-plus years of innovation and expertise, this release enables customers to advance their digitalization journey to drive operational excellence, accelerate project delivery, and achieve sustainability and profitability goals.

Included in the aspenONE V14.3 May 2024 media:

- aspenONE Performance Engineering
- Standard or Token version of aspenONE Manufacturing & Supply Chain
- aspenONE Asset Performance Management (these are download-only items)
- AspenTech DataWorks
- AspenTech Digital Grid Management (no updates for this release)
- AspenTech Subsurface Science & Engineering (no updates for this release)
- aspenONE Informatica® PowerCenter, a third-party component used in conjunction with Aspen Supply Chain Connect™ (this is a download-only item)

What's New in aspenONE V14.3 May 2024

With the release of aspenONE® V14.3 May 2024, customers can further advance their digitalization journey to achieve higher levels of operational excellence.

To learn more about the new innovations in this release, visit: <https://www.aspentech.com/en/whats-new>

Note: As most customers prefer to download the media, the default delivery option has been changed to electronic delivery. You will receive an email with a link to the media once the order is placed. You may also choose to receive physical media if you prefer.





Before You Install

Before installing any AspenTech® product, we recommend that you read the Installation Guide and Release Notes for each product you intend to install. This important documentation can be found in the Documents folder on the media.

Platform support information is available at:

[aspentech.com/platform-support](https://www.aspentech.com/platform-support)

The **Prerequisite Viewer** can be used to identify the prerequisites — even before the software is available.

Visit the Aspen Technology Customer Support Website:

https://esupport.aspentech.com/S_Article?id=000047944 for instructions on how to deploy the aspenONE Engineering Software Suite in the cloud.

License Server

The SLM License Server must be V12.0 or later before deploying aspenONE V14 software.

The SLM Server should always be upgraded first, followed by the SLM Clients to avoid any potential incompatibility issues. The SLM Client will be automatically installed when installing any V14 software.

Role-Based Security: Client tools are automatically installed as part of the security bundle. For more information, see the Aspen Framework Installation Manual and the Aspen Local Security Server Installation Guide, located in the aspenONE Manufacturing & Supply Chain folders on the media.

Performance Engineering Interoperability

The aspenONE Performance Engineering suite offers a set of fully integrated products. Users receive maximum benefits and flexibility when utilizing the entire suite of integrated products. You should always upgrade to the latest process design tools when starting a new design project. This will guarantee availability of the latest property data, cost data, design codes, defect fixes and functionality. Product families should be installed as a suite, using a compatible set of interoperable versions, as delivered. Coexistence is the ability for multiple versions of the Performance Engineering suite to be installed on the same desktop computer. The following products support coexistence:

- Aspen Plus®
- Aspen HYSYS®
- Aspen Exchanger Design & Rating™
- Aspen Economic Evaluation™
- Aspen Basic Engineering™
- Aspen Multi-Case™
- Aspen Knowledge™
- Aspen OptiPlant 3D Layout™

Manufacturing & Supply Chain Interoperability

The aspenONE Manufacturing & Supply Chain suite includes five major families of integrated products. We recommend that you install a complete family of products of the same version. Multiple product families installed on the same machine should also be the same version.

- aspenONE Advanced Process Control (APC)
- aspenONE Manufacturing Execution Systems (MES)
- aspenONE Petroleum Supply Chain (PSC)
- aspenONE Supply Chain Management (SCM)
- Aspen GDOT™

Asset Performance Management Interoperability

The aspenONE Asset Performance Management (APM) suite includes the products listed below. When using more than one APM product on the same computer, or as part of an integrated solution across multiple computers, we recommend using the same software version for all products. All products in the APM suite may be updated at a different release cycle from the products in the Engineering and Manufacturing & Supply Chain suites. **Note:** It is recommended that no other product suites be installed on a computer which have APM products already installed on it.

- Aspen Mtell®
- Aspen Fidelis™
- Aspen ProMV®
- Aspen Process Pulse™
- Aspen Unscrambler™

AspenTech DataWorks

AspenTech DataWorks enables industrial organizations to achieve their critical digitalization goals by providing a zero-compromise industrial data solution built by the experts in industrial data and asset optimization. DataWorks provides companies with the industrial data solutions they need to integrate legacy, mission-critical technologies with emerging technologies, bridging OT and IT.

- AspenTech Inmation™

AspenTech Subsurface Science & Engineering (No updates for this release)

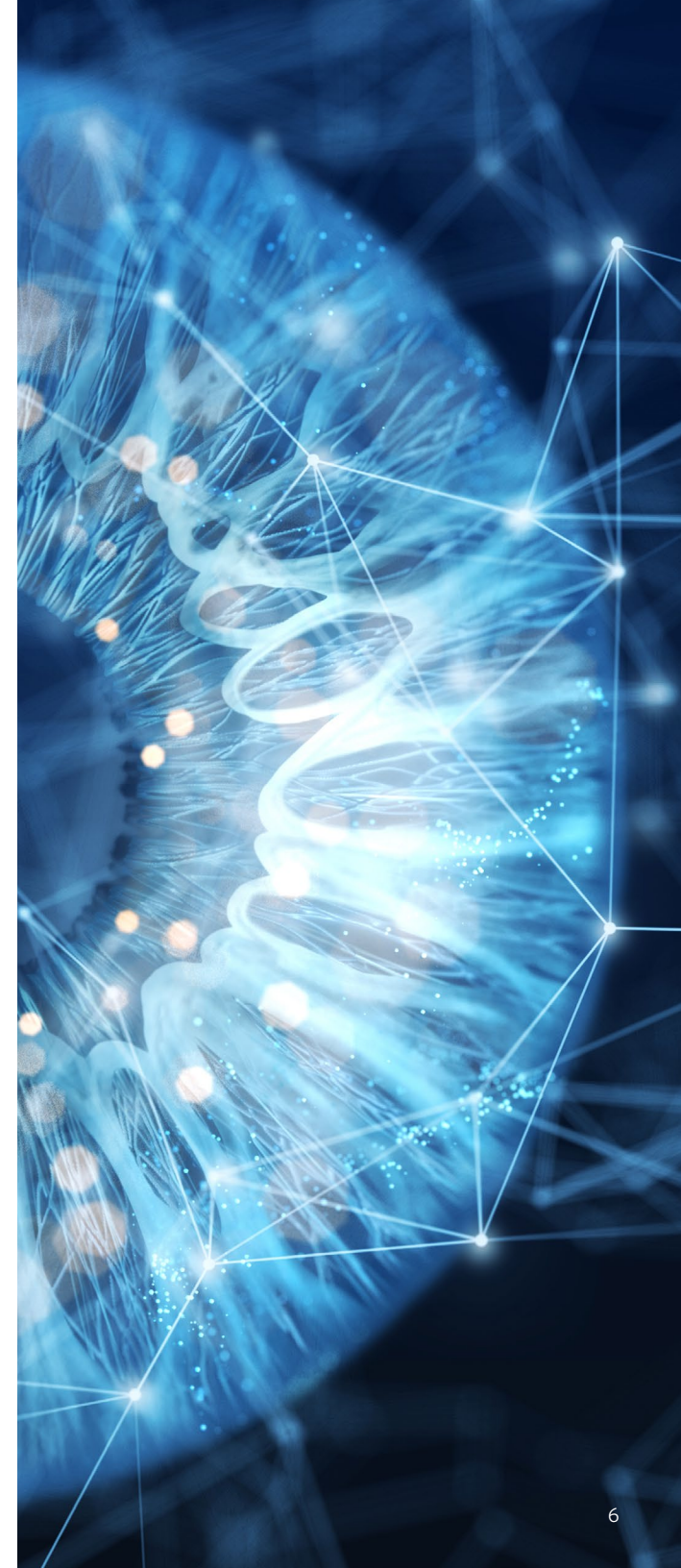
AspenTech Subsurface Science & Engineering products enable customers to increase efficiency, reduce costs and improve their return on investment. In this first release of AspenTech Subsurface Science & Engineering through aspenONE, we include the products listed below, covering the disciplines of Formation Evaluation, Geological Modeling, Drilling, Reservoir Engineering and Production Management.

- Aspen Epos™
- Aspen Geolog™
- Aspen METTE™
- Aspen OpsLink™
- Aspen ResView™
- Aspen RMS™
- Aspen SeisEarth™
- Aspen SKUA™
- Aspen Tempest™

AspenTech Digital Grid Management (No updates for this release)

Digital Grid Management provides leading solutions for real-time control, optimization and management of complex power networks, from the largest global power providers to microgrids. Reliably, securely and efficiently operate the grid while integrating new green energy sources for a reduced carbon footprint.

- AspenTech Operational Insights™



Installing and Upgrading Your Software

Start planning your upgrade today! Visit our Product Upgrade Journey page on the support site for best practices to help you upgrade faster and more efficiently: https://esupport.aspentech.com/S_Article?id=000099464

Launch the installer by clicking Setup.exe. The aspenONE Installer will guide you through the necessary steps to install new products, upgrade currently installed products, configure licensing or create an install script for automated software deployment. Please read the instructions on each screen carefully. Select the product suite you want to install and click on "Begin Install." This will launch the corresponding installer.

For instructions on how to deploy aspenONE Engineering Software in the cloud, refer to this Knowledge Base article on the customer support site: https://esupport.aspentech.com/S_Article?id=000047944

Note:

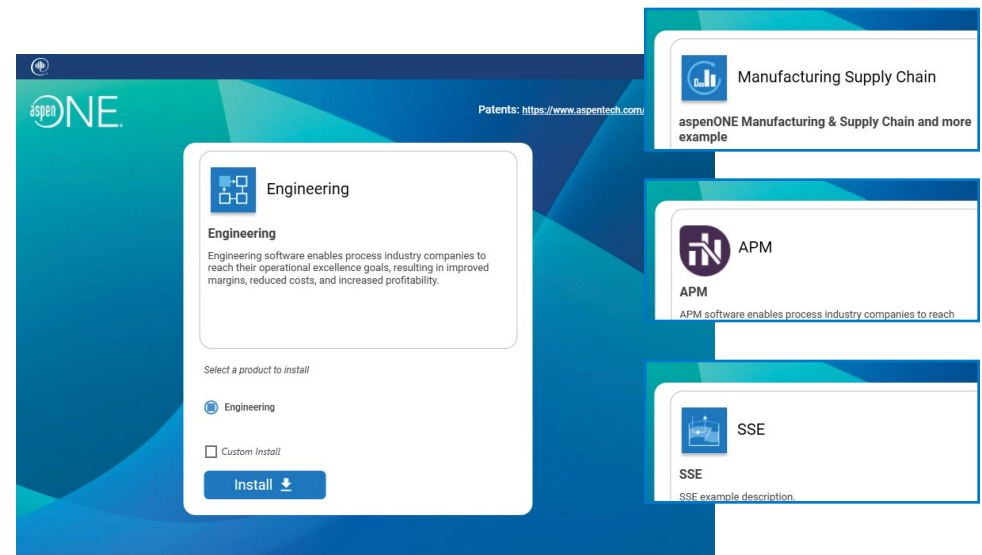
- If you originally installed aspenONE software via a network share and need to repair the software, perform the Repair function from a network.
- If you performed an original installation from a physical USB, perform the Repair function from the physical USB.

Select the products you want to install. The installer will automatically check for product dependencies and product-specific prerequisites before installing. If any system prerequisites are missing from your system, the installer will list this information.

The media may also include patch updates for selected aspenONE products. If patch updates are available on the media, the installer will notify you and update your system with the corresponding patches.

Once the install has completed, use the Update Agent to check for any patches or updates posted since the V12.2 release. Here is a link to a Knowledge Base article that describes how to use the Update Agent:

https://esupport.aspentech.com/S_Article?id=000048550



V14 Installation screens. ENG, MSC, APM and SSE shown above.

Documentation

Context-sensitive help can be accessed by:

- Clicking the Help button on an application dialog box
- Pressing F1 while in the application
- Clicking the application Help menu and selecting Help

Additional documents in PDF format can be accessed by:

- Clicking the Documentation link on the product's start page or start tab, or by selecting Documentation from the product's Help menu
- Logging onto the AspenTech Support Center site and browsing the Documentation page
- Downloading documentation from the product-specific pages on the AspenTech Support Center site

For Aspen Plus, Aspen HYSYS, Aspen Exchanger Design & Rating and Aspen DMC3 Builder,[™] you can access additional documents by:

- Clicking on the link to Exchange on the File menu and then entering a search string in the search box
- Clicking on the documentation search shortcut on the Resources ribbon and then entering a search string in the search box, or by browsing through the list of published training documents

You will need to establish AspenTech Support Center credentials in order to access the Online Documentation Center.

Note: You must have Adobe Acrobat Reader installed in order to view and print PDF documentation. You can download the free viewer from the Adobe website at adobe.com.

Translated Versions

We know it is important for our customers to have access to translated versions of a new release as soon as possible. As a result, we are transitioning to a simultaneous shipment (sim-ship) model that includes product translations in the initial release. In V14, the majority of translations will sim-ship, and a small sub-set will become available shortly after the initial release.

Refer to the Knowledge Base article [44539](#) on the support site to see the latest status on translated versions.



Technical Support

For more information on aspenONE software, register at our online [support center](#).

The AspenTech support website enables you to:

- Access product updates and patches, product training information, online training and current product documentation
- Search our online Knowledge Base for tech tips, application examples, known issues, new features and other informative resources
- Submit and track technical issues and product defects

- Report any difficulties with installing or running our software
- Ask questions about the contents of the software package
- Find regional contact information

Customers can also access valuable support materials, including online training, flowsheet models and Knowledge Base items via Exchange inside Aspen Plus, Aspen HYSYS, Aspen Exchanger Design & Rating and Aspen DMC3 Builder.

Support Center Hours & Phone Numbers

North & Latin America

8:00 - 19:00 Eastern Time, Monday - Friday

North America Support Center (toll-free)

+1 888 996 7100

U.S., Canada, Mexico

+1 781 221 5500

Argentina

(54) 800-345-0743

Brazil

(55) 11 3197-3054

Colombia

(57) 1 5088504

Mexico

(52) 55 1167 8268

Venezuela (toll-free)

(58) 800-1049175

Europe, Middle East, and Africa

8:30 - 18:00 Central European Time, Monday - Friday

Austria

(43) 720 116664

Belgium (toll-free)

(32) 800 40 687

Denmark

(45) 89 88 20 65

Finland

(358) 9 42450027

France

(33) 184 88 64 86

Germany (toll-free)

(49) 0800 1010068

Ireland

(353) 818 000 171

Italy

(39) 800 596 377

Netherlands

(31) 85 208 3113

Russia

(44) 203 973 34-31

South Africa

(27) 87 550 3890

Spain

(34) 932 20 16 60

Sweden

(46) 31 301 18 44

Switzerland

(41) 31 528 03 17

UAE (toll-free)

(971) 800-0320904

United Kingdom

(44) 800 060 8929

Asia and Pacific Region

9:00 - 17:00 Local time, Monday - Friday

Australia

(61) 03 8652 1086

China

(86) 10 5387 5867

India

(91) 20 6678 2574

Indonesia

(62) 21 5096 0391

Japan

(81) 3-4579-0258

Korea (toll-free)

(82) 080-822-1493

Korea

(82) 2-6105-2463

Malaysia

(60) 3-3099 2676

Philippines

(63) 2 271 1405

Singapore

(65) 3158 1682

Taiwan

(886) 00801 856 983

Thailand

(66) 1800 012 377



About AspenTech

Aspen Technology, Inc. (NASDAQ: AZPN) is a global software leader helping industries at the forefront of the world's dual challenge meet the increasing demand for resources from a rapidly growing population in a profitable and sustainable manner. AspenTech solutions address complex environments where it is critical to optimize the asset design, operation and maintenance lifecycle. Through our unique combination of deep domain expertise and innovation, customers in asset-intensive industries can run their assets safer, greener, longer and faster to improve their operational excellence.

[aspentech.com](https://www.aspentech.com)

© 2024 Aspen Technology, Inc. All rights reserved. AT-3026

