

# V14™

## Software Upgrades to Drive Operational Excellence and Achieve Sustainability Goals

Including Updates to the Engineering, Manufacturing & Supply Chain, Asset Performance Management, AIoT and Subsurface Science & Engineering Suites

# CONTENTS

Before You Install	4
Installing and Upgrading Your Software	7
Documentation	8
Translated Versions	8
Technical Support	9
Locations	10

## Welcome to Release 14 of aspenONE® Software

Exciting news: aspenONE V14 is here, with important updates to a number of products across our portfolio (complete list below). Backed by AspenTech's 40 years of innovation and expertise, this release enables customers to advance their digitalization journey to drive operational excellence and achieve sustainability and profitability goals.

Specifically, V14 includes media for the following suites:

- aspenONE Engineering
- Standard or Token version of aspenONE Manufacturing & Supply Chain
- aspenONE Asset Performance Management (these are download-only items)
- Aspen Artificial Intelligence of Things (AIoT) Hub™
- AspenTech Subsurface Science & Engineering
- aspenONE Informatica® PowerCenter®, a third-party component used in conjunction with Aspen Supply Chain Connect™ (this is a download-only item)



## What's New in aspenONE V14

The aspenONE V14 software release includes product enhancements to advance customers' digitalization journey to drive operational excellence and achieve sustainability and profitability goals.

To learn more about the new features in V14, visit:

<https://www.aspentech.com/en/whats-new>

**Note:** As most customers prefer to download the media, the default delivery option has been changed to electronic delivery. You will receive an email with a link to the media once the order is placed. You may also choose to receive physical media if you prefer.







## Before You Install

Before installing any AspenTech® product, we recommend that you read the Installation Guide and Release Notes for each product you intend to install. This important documentation can be found in the Documents folder on the media.

Platform support information is available at:

[aspentech.com/platform-support](https://aspentech.com/platform-support)

The **Prerequisite Viewer** can be used to identify the prerequisites — even before the software is available.

Visit the Aspen Technology Customer Support Website

[https://esupport.aspentech.com/S\\_Article?id=000047944](https://esupport.aspentech.com/S_Article?id=000047944) for instructions on how to deploy aspenONE Engineering Software Suite in the cloud.

### License Server

The SLM License Server must be V12.0 or later before deploying aspenONE V14 software.

The SLM Server should always be upgraded first, followed by the SLM Clients to avoid any potential incompatibility issues. The SLM Client will be automatically installed when installing any V14 software.

**Role-Based Security:** Client tools are automatically installed as part of the security bundle. For more information, see the Aspen Framework Installation Manual and the Aspen Local Security Server Installation Guide, located in the aspenONE Manufacturing & Supply Chain folders on the media.

## Engineering Interoperability

The aspenONE Engineering suite offers a set of fully integrated products. Users receive maximum benefits and flexibility when utilizing the entire suite of integrated products. You should always upgrade to the latest process design tools when starting a new design project. This will guarantee availability of the latest property data, cost data, design codes, defect fixes and functionality. Product families should be installed as a suite, using a compatible set of interoperable versions, as delivered. Coexistence is the ability for multiple versions of the Engineering suite to be installed on the same desktop computer. The following products support coexistence:

- Aspen Plus®
- Aspen HYSYS®
- Aspen Exchanger Design & Rating™
- Aspen Economic Evaluation™
- Aspen Basic Engineering™
- Aspen Multi-Case™
- Aspen Knowledge™
- Aspen OptiPlant 3D Layout™

## Manufacturing & Supply Chain Interoperability

The aspenONE Manufacturing & Supply Chain suite includes five major families of integrated products. We recommend that you install a complete family of products of the same version. Multiple product families installed on the same machine should also be the same version.

- aspenONE Advanced Process Control (APC)
- aspenONE Manufacturing Execution Systems (MES)
- aspenONE Petroleum Supply Chain (PSC)
- aspenONE® Supply Chain Management (SCM)
- Aspen GDOT™
- Aspen Unified GDOT™
- Aspen Multivariate Statistical Analysis™

## Asset Performance Management Interoperability

The aspenONE Asset Performance Management (APM) suite includes the products listed below. When using more than one APM product on the same computer, or as part of an integrated solution across multiple computers, we recommend using the same software version for all products. All products in the APM suite may be updated at a different release cycle from the products in the Engineering and Manufacturing & Supply Chain suites. **Note:** It is recommended that no other product suites be installed on a computer which have APM products already installed on it.

- Aspen Event Analytics™
- Aspen Mtell®
- Aspen Fidelis™
- Aspen ProMV®
- Aspen Performance Management Insights™



## Artificial Intelligence of Things (AIoT) Hub

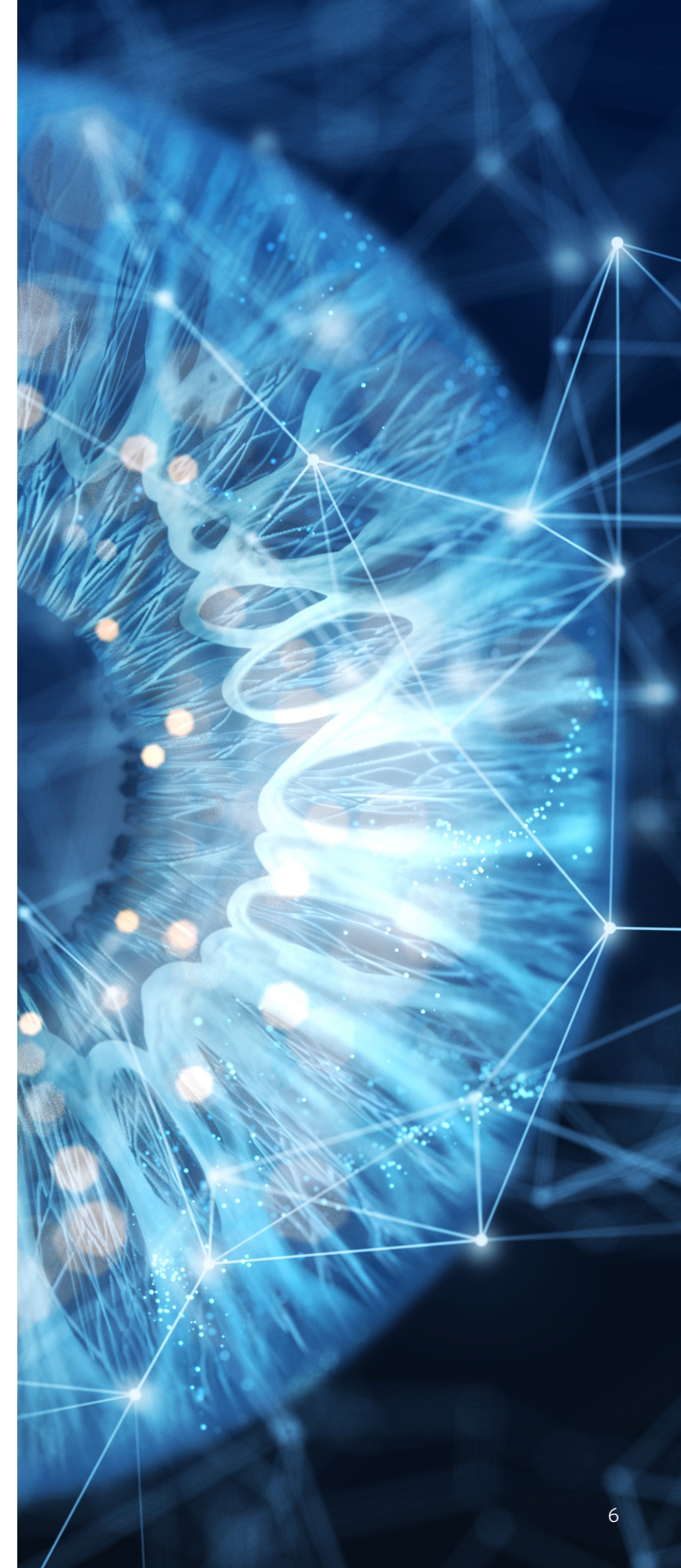
By integrating Artificial Intelligence (AI) and the Industrial Internet of Things (IIoT)—two game-changing technologies for capital-intensive industries—the Aspen AIoT Hub™ enables the next generation of Industrial AI infrastructure, to achieve more efficient operations, create seamless human-machine workflows and rapidly harmonize and transform data into tangible business outcomes. Products include:

- Aspen InfoPlus21®
- Aspen Enterprise Insights™
- Aspen Enterprise IP.21 Historian™
- Aspen Data Science Studio™
- aspenONE Process Explorer™
- Aspen Connect™
- Aspen Production Record Manager™

## Subsurface Science & Engineering

The AspenTech Subsurface Science and Engineering products enable customers to increase efficiency, reduce costs and improve their return on investment. In this first release of AspenTech Subsurface Science & Engineering through aspenONE, we include the products listed below, covering the disciplines of Formation Evaluation, Geological Modeling, Drilling, Reservoir Engineering and Production Management.

- Aspen Geolog™
- Aspen SKUA™
- Aspen METTE™
- Aspen Sysdrill™
- Aspen OpsLink™
- Aspen Tempest™
- Aspen ResView™
- Aspen RMS™



# Installing and Upgrading Your Software

Start planning your upgrade today! Visit our [https://esupport.aspentech.com/S\\_Article?id=000099464](https://esupport.aspentech.com/S_Article?id=000099464) Product Upgrade Journey page on the support site for best practices to help you upgrade faster and more efficiently.

Launch the installer by clicking Setup.exe. The aspenONE Installer will guide you through the necessary steps to install new products, upgrade currently installed products, configure licensing or create an install script for automated software deployment. Please read the instructions on each screen carefully. Select the product suite you want to install and click on "Begin Install." This will launch the corresponding installer.

For instructions on how to deploy aspenONE Engineering Software in the cloud, refer to this Knowledge Base article on the customer support site: [https://esupport.aspentech.com/S\\_Article?id=000047944](https://esupport.aspentech.com/S_Article?id=000047944)

## Note:

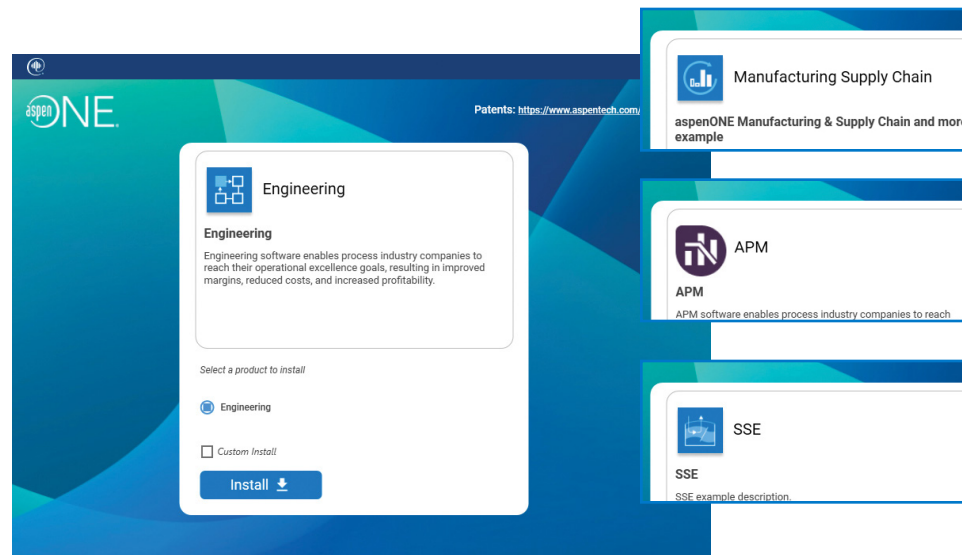
- If you originally installed aspenONE software via a network share and need to repair the software, perform the Repair function from a network.
- If you performed an original installation from a physical USB, perform the Repair function from the physical USB.

Select the products you want to install. The installer will automatically check for product dependencies and product-specific prerequisites before installing. If any system prerequisites are missing from your system, the installer will list this information.

The media may also include patch updates for selected aspenONE products. If patch updates are available on the media, the installer will notify you and update your system with the corresponding patches.

Once the install has completed, use the Update Agent to check for any patches or updates posted since the V12.2 release. Here is a link to a Knowledge Base article that describes how to use the Update Agent:

[https://esupport.aspentech.com/S\\_Article?id=000048550](https://esupport.aspentech.com/S_Article?id=000048550)



V14 Installation screens. ENG, MSC, APM and SSE shown above.

# Documentation

## Context-sensitive help can be accessed by:

- Clicking the Help button on an application dialog box
- Pressing F1 while in the application
- Clicking the application Help menu and selecting Help

## Additional documents in PDF format can be accessed by:

- Clicking the Documentation link on the product's start page or start tab, or by selecting Documentation from the product's Help menu
- Logging onto the AspenTech Support Center site and browsing the Documentation page
- Downloading documentation from the product-specific pages on the AspenTech Support Center site

## For Aspen Plus, Aspen HYSYS, Aspen Exchanger Design & Rating and Aspen DMC3™ Builder, you can access additional documents by:

- Clicking on the link to Exchange on the File menu and then entering a search string in the search box
- Clicking on the documentation search shortcut on the Resources ribbon and then entering a search string in the search box, or by browsing through the list of published training documents

You will need to establish AspenTech Support Center credentials in order to access the Online Documentation Center.

**Note:** You must have Adobe Acrobat Reader installed in order to view and print PDF documentation. You can download the free viewer from the Adobe website at [adobe.com](http://adobe.com).

## Translated Versions

We know it is important for our customers to have access to translated versions of a new release as soon as possible. As a result, we are transitioning to a simultaneous shipment (sim-ship) model that includes product translations in the initial release. In V14, the majority of translations will sim-ship, and a small sub-set will become available shortly after the initial release.

Refer to the Knowledge Base article [44539](#) on the support site to see the latest status on translated versions.





## Technical Support

For more information on aspenONE software, register at our online [support center](#).

The AspenTech support website enables you to:

- Access product updates and patches, product training information, online training and current product documentation
- Search our online Knowledge Base for tech tips, applications examples, known issues, new features and other informative resources
- Submit and track technical issues and product defects

- Report any difficulties with installing or running our software
- Ask questions about the contents of the software package
- Find regional contact information

Customers can also access valuable support materials, including online training, flowsheet models and Knowledge Base items via Exchange inside Aspen Plus, Aspen HYSYS, Aspen Exchanger Design & Rating and Aspen DMC3 Builder™.

# Locations

## Worldwide Headquarters

Aspen Technology, Inc.  
20 Crosby Drive  
Bedford, MA 01730  
United States  
phone: +1-781-221-6400  
fax: +1-781-221-6410  
[info@aspentech.com](mailto:info@aspentech.com)

## Regional Headquarters

Houston, TX | USA  
phone: +1-281-584-1000

São Paulo | Brazil  
phone: +55-11-3443-6261

Reading | United Kingdom  
phone: +44-(0)-1189-226400

Singapore | Republic of Singapore  
phone: +65-6395-3900

Manama | Bahrain  
phone: +973-13606-400

For a complete list of offices, please visit  
[aspentech.com/locations](http://aspentech.com/locations)

## North America

Toll-free from U.S.,  
Canada, Mexico  
+1-888-996-7100

From outside U.S.,  
Canada, Mexico  
+1-781-221-5500

Mexico  
+52-(55)-3600-7140

## Europe, Middle East, and Africa\*

European Support Center  
+44-(0)-1189226555

Russia  
+7-495-7821907

Middle East Support Center  
+973-1750-2736

## South America

Toll-free from Argentina  
+0800-333-0125

Toll-free from Brazil  
+0800-891-0291

Brazil  
+55-11-3443-6256

Toll-free from Venezuela  
+0800-100-2410

## Asia and Pacific Region

Australia  
1-800-203224

China-China Net Comm  
10-800-712-2160

China-Others  
10-800-120-2160

Hong Kong  
+1-800-933-915

India  
+91-20-667-82574

India-Reliance and Bharti  
800001-6020

Indonesia  
+001-803-011-4210

Japan  
0066-33-132920

Korea  
00798-14-800-7569

Malaysia  
+1-800-814135

New Zealand  
+1-0800-443254

Singapore  
800-120-5022

Taiwan  
+00801-13-7953

Thailand  
+001-800-12-066-6381

Vietnam  
120-11037



## About AspenTech

Aspen Technology, Inc. (NASDAQ: AZPN) is a global software leader helping industries at the forefront of the world's dual challenge meet the increasing demand for resources from a rapidly growing population in a profitable and sustainable manner. AspenTech solutions address complex environments where it is critical to optimize the asset design, operation and maintenance lifecycle. Through our unique combination of deep domain expertise and innovation, customers in capital-intensive industries can run their assets safer, greener, longer and faster to improve their operational excellence.

[aspentech.com](https://www.aspentech.com)

© 2023 Aspen Technology, Inc. All rights reserved. AT-05114

