

Aspen Supply Chain Planner

Maximize business profitability by determining the optimal production plan for even the most complex supply chains

Aspen Supply Chain Planner develops the most optimal plan taking into account labor and equipment, raw materials or feedstock, inbound/outbound transportation, storage capacity, and other variables. An easy-to-use interface with streamlined workflows helps you quickly navigate through supply chain complexity and respond faster to unexpected market conditions to profitably meet production and management goals.

Aspen Supply Chain Planner has helped customers realize the following benefits:

- **Maximize Business Profitability.** Optimizes supply to profitably meet customer demand and business revenue goals.
- **Meet Dynamic Inventory Targets.** Quickly re-optimizes inventory targets in response to changing business needs.
- **Improve Business Process.** Provides a framework for cost reduction, and reduced effort in plan development.
- **Improve User Productivity.** Facilitates quick analysis and decision-making with an intuitive user interface.

||||||| The Challenge: So Many Variables, So Much at Stake

Determining a “game plan” for the most profitable fulfillment of anticipated demand can be a challenge due to changing business conditions and competing goals between functional units such as marketing, finance, production, and procurement. In addition, events and factors such as new product launches, seasonal spikes product mix, plant shutdowns, and raw material availability must be proactively considered within the plan to avoid major upsets

||||||| The AspenTech Solution: Considering All Factors to Improve Profitability

Aspen Supply Chain Planner enables you to fully maximize margins while balancing supply and demand. It provides quick and easy access to the latest demands and supply capability of all plants in the network along with associated costs, allowing you to develop the most optimal plan. *Aspen Supply Chain Planner* typically

determines production levels by product or family, location, and time period for an intermediate time horizon up to two years. The goal is to meet expected demand in the most profitable manner while considering:

- Raw material availability and price
- Cost of changing production levels from one period to the next
- Production costs
- Transportation costs

To obtain the best production and distribution plans, each business unit needs functionality to align as closely as possible with its unique practices and priorities. With *Aspen Supply Chain Planner*, business operations from the most simple to the most complex can be modeled for optimum results, in both make-to-stock and make-to-order environments.

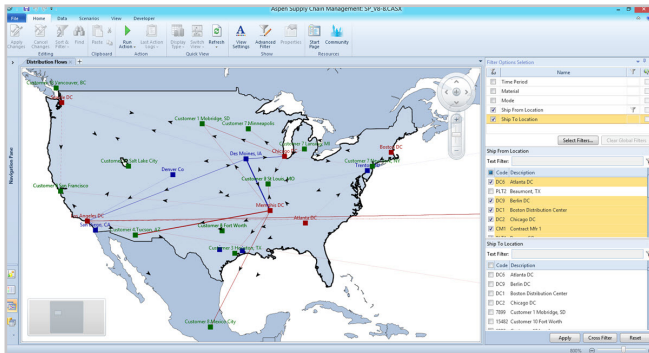
Aspen Supply Chain Planner

||||||| Improve Sales & Operations Planning

The role of *Aspen Supply Chain Planner* in the Sales & Operations Planning (S&OP) process is to focus on business-wide supply and inventory planning, specifically determining “where to make what.” It involves allocating production across various plants while minimizing transportation and operating costs. By considering both the production and distribution, *Aspen Supply Chain Planner* provides a globally optimal solution while respecting capacity and other constraints. Issues addressed include:

- Where to procure raw or intermediate materials
- Sourcing of production, both across and within plants
- Use of internal finite capacity versus purchases, tools, contract production, exchanges, or infinite capacity
- Movements of intermediates between manufacturing sites

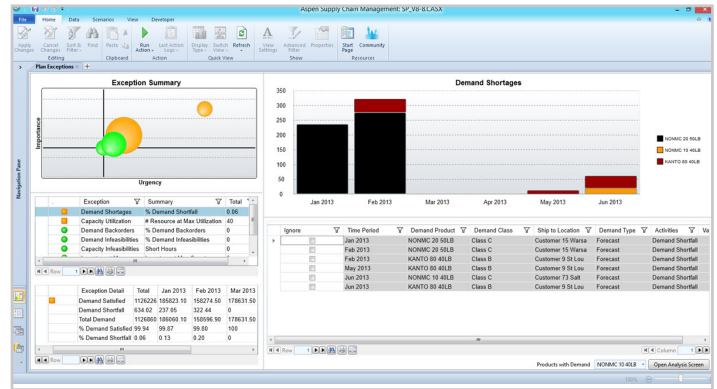
By enabling users to quickly hone in on the information that is most useful to them, *Aspen Supply Chain Planner* can help planners evaluate several alternatives and determine answers that will increase profits and improve customer service, all within the context of your unique business constraints.



Color-coded mapping capabilities provide visual representation of supply and demand points, distribution flows, and marginal supply cost for a given scenario.

||||||| Supply and S&OP Analytics

Aspen Supply Chain Planner also provides web-based Supply and Sales & Operations Planning (S&OP) Analytics for enterprise-wide reporting and access to data and analysis during the planning process. These capabilities allow you to attain real-time visibility into your current situation by combining data from your ERP and production systems, as well as results from your planning and scheduling tools, for a complete picture of your supply chain.

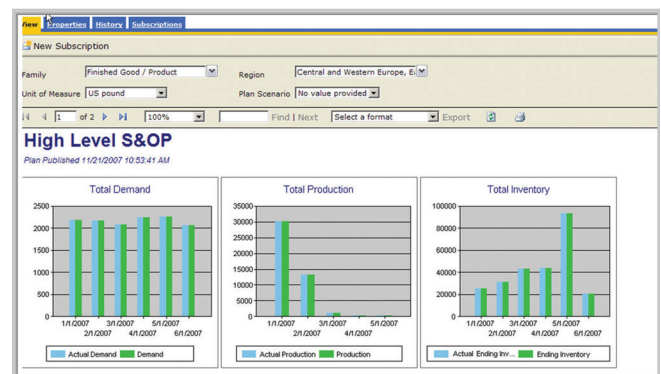


Advanced exception reporting supports the S&OP process by providing quick identification of the most critical problems and constraints.

||||||| Powerful Scenario Analysis

Aspen Supply Chain Planner boasts value-driven analysis capabilities that enable you to develop and compare multiple scenarios for your operations across multiple plants. The differences between various “what-if” scenarios are easily discerned through graphical or tabular comparison.

With the scenario analysis capability, you can simulate your business by building custom scenarios around potential business conditions such as demand spikes, competitor activities, or proposed changes in capacity including shutdowns.



High-level Sales and Operations Planning reports are displayed showing plan vs. actual. Each of these reports can be broken down into more finite detail.

Function	Benefit
<p>Enterprise Planning and Decision Support</p> <ul style="list-style-type: none"> Build optimal production, distribution, and inventory plans Calculate optimal inventory target levels for raw materials, intermediates and finished goods Industry leading user interface provides easy navigation and a Microsoft® look and feel Flexible architecture and in-memory processing 	<ul style="list-style-type: none"> Optimizes supply to profitably meet customer demand and business revenue goals Enables planners to quickly re-optimize plans to respond to unplanned events in a time-frame that meets business needs Enables users to quickly discover and access advanced functions Fast performance when optimizing or manipulating large amounts of data
<p>Sales & Operations Planning (S&OP)</p> <ul style="list-style-type: none"> Support S&OP process with production and distribution plans by product, customer, family, region, facility, or any other category Determines the optimal use of resources and sourcing patterns Advanced exception reporting easily identifies problems or constraints in the supply plan Enable dynamic inventory targets 	<ul style="list-style-type: none"> Provides a framework for cost reduction and service improvement Increased plan development and analysis, allowing more alternatives for the business to be considered Quickly evaluate alternate scenarios in S&OP meeting Quickly re-optimizes inventory targets to support management goals
<p>Models Simple or Complex Business Situations</p> <ul style="list-style-type: none"> Model unlimited supply/demand points and intermediate storage facilities Handles make-to-stock and make-to-order manufacturing environments 64-bit computing 	<ul style="list-style-type: none"> Reveals previously unrecognized constraints so they can be addressed Balances trade-offs between all constraints to meet management goals Solve larger, more complex problems in less time
<p>Scenario Analysis</p> <ul style="list-style-type: none"> Provide value-driven analysis capabilities to develop multiple scenarios Include summary of key variances across scenarios Provide quick and easy data editing, filtering, and drill-down capability into details behind each scenario 	<ul style="list-style-type: none"> Enables planners to perform rigorous business simulation and compare multiple scenarios for operations across multiple plants Allows insight into potential business conditions such as demand spikes, competitor activities, or proposed changes in capacity
<p>Reporting</p> <ul style="list-style-type: none"> Provide reports in graphical and tabular formats that are easily customizable Personalization of work area allows users to save favorite screen configurations Deliver web-based Supply and S&OP Planning reports for enterprise-wide access to data and analysis during the planning process 	<ul style="list-style-type: none"> Improves decision-making capability and enterprise-wide collaboration Increases productivity by customizing the layout to a user's specific needs Improves data collection and consolidation, providing "one version of the truth" Provides visibility into the latest supply plans and scenarios at desired level of detail

